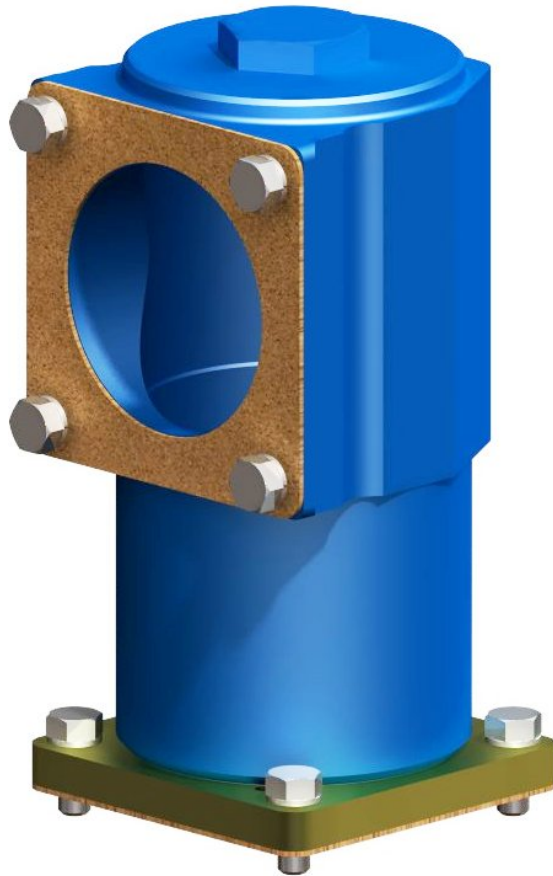


Installation Instructions for: **RIS-FLANGE4-TEE** & **GENERIC DROP TUBE MOUNTED OPD'S**

(applicable to both flanged & threaded versions)

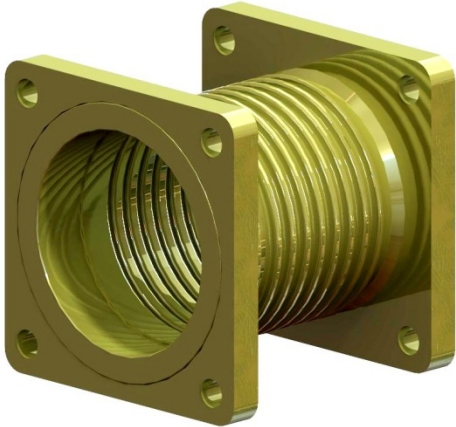


**ALWAYS USE
NON-SPARK TOOLS!**

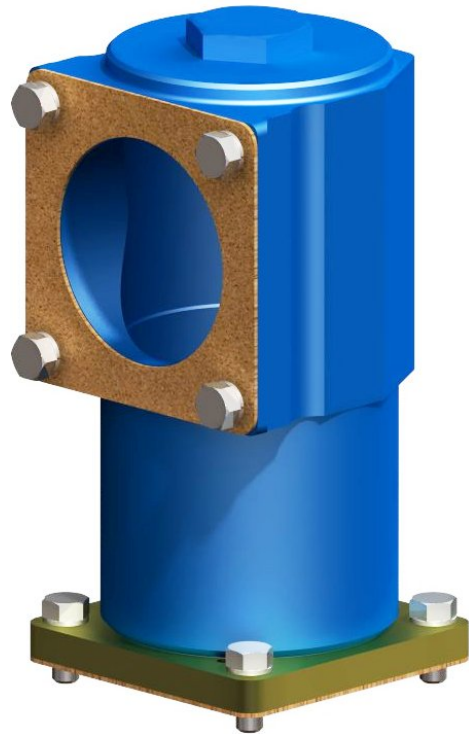
PLEASE READ CAREFULLY BEFORE INSTALLATION

ALWAYS USE NON-SPARK TOOLS!

IN THE BOX:



4" to 4" Flex Connection
(Optional)



RIS-FLANGE4-TEE Valve Assembly



RIS-FLANGE4-BSPT
Threaded Base Adaptor (Optional)
to allow for use on 4" threaded port tank lid
(i.e. not a RIS-FLANGE Lid)

ALWAYS USE NON-SPARK TOOLS!

PREPARATION

The tank lid top surface (either threaded socket or flange joint type) should be thoroughly cleaned prior to installation of RIS-FLANGE4-TEE components. Threaded sockets should be tested with a suitable male thread fitting to ensure there is no binding. Tight threads should be cleared with a thread tap of correct specification:

2in	BSPP Female	(ISO 228-G2)
3in	BSPP Female	(ISO 228-G3)
4in	BSPP Female	(ISO 228-G4)

Likewise with flange style tank lids, the blind bolthole tapping's should be individually and thoroughly cleaned (compressed air if available). Using a dummy bolt to check for full thread engagement without binding.

If required, tight threads should be cleared with a suitable thread tap, refer bolt table.

Bolt Thread (Male Tap Size)	Recommended Torque Setting	Socket/Spanner Size
M8 x 1.25	20 Nm (15 lbf/ft)	13mm AF
M10 x 1.50	40 Nm (30lbf/ft)	17mm AF
M12 x 1.75	60 Nm (60lbf/ft)	19mm AF

Warning – Do not over tighten bolts especially into alloy body components.

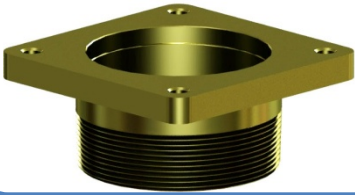
RECOMMENDED INSTALLATION TOOLS REQUIRED FOR RIS-FLANGE4-TEE



- RIS-TOOL 5216
- Spanners 19mm, 2inch AF (or adjustable up to 2 inch)
- Metric socket 19mm
- Torque wrench
- Thread / O-ring Grease

ALWAYS USE NON-SPARK TOOLS!

RIS-FLANGE4-TEE AND GENERIC DROP TUBE INSTALLATION.

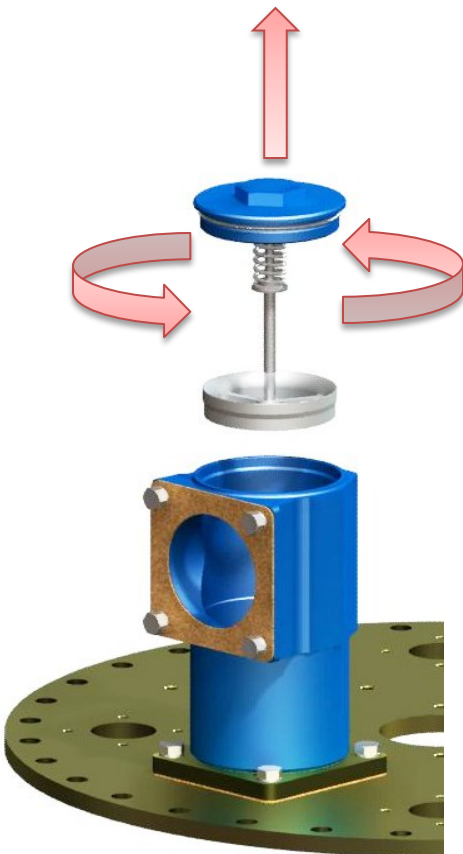
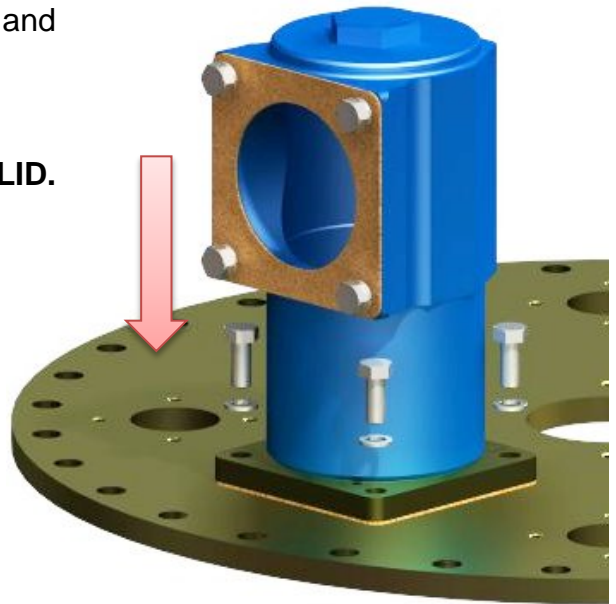


If you are fitting to a threaded joint, fit the RIS-FLANGE4-BSPT to the tank lid first using soft setting thread seal – recommended to use GASOILA.



1. Fit supplied Gasket on tank lid and place RIS-FLANGE4-TEE above Gasket. Fit M12 bolts and springs washers using NON-SPARK 19mm Socket/Spanner.

NOTE: DO NOT DISMANTLE THE VALVE PRIOR TO INSTALLATION ON THE TANK LID.



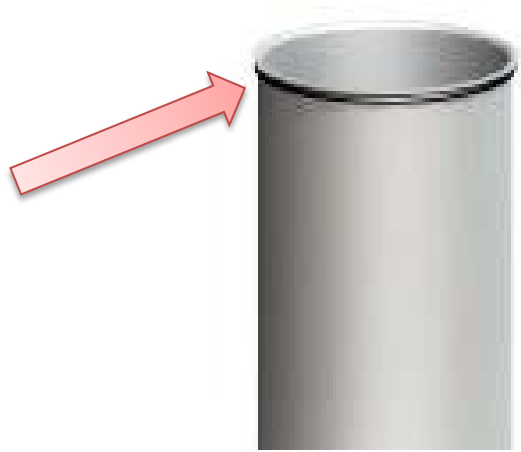
2. Remove valve cartridge as shown (using RIS-TOOL 5216), ensuring the cartridge remains clean until re-assembly.



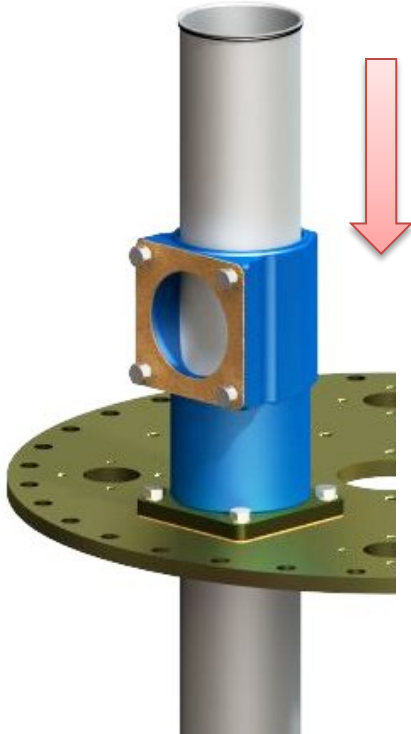
RIS-TOOL 5216

ALWAYS USE NON-SPARK TOOLS!

3. Fit O-ring onto selected drop tube (at swaged end) and apply o-ring grease.

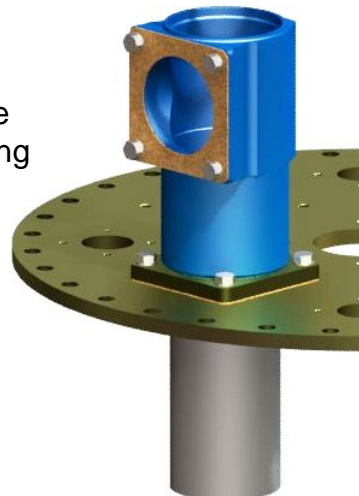


4. Insert the drop tube into the open valve ensuring the swaged end locates on the silver adaptor within the valve.

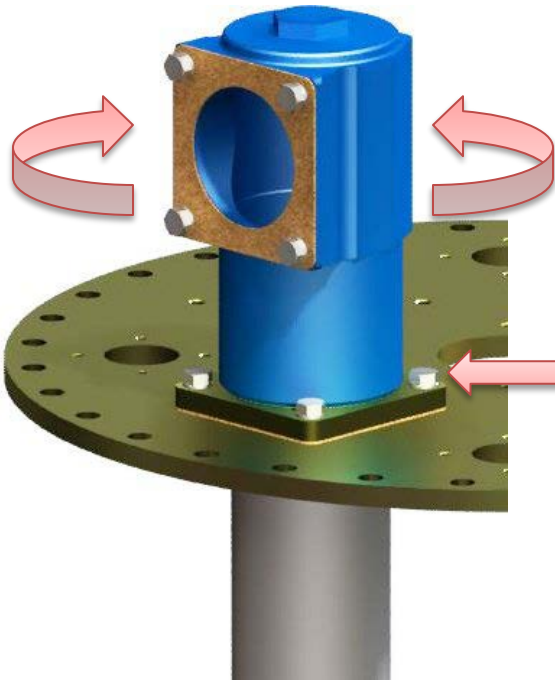


CAUTION: FOR DROP TUBE MOUNTED OPD's, MAKE CERTAIN THE FLOAT IS ALIGNED CORRECTLY IN THE TANK. MIS-ALIGNMENT COULD PREVENT THE VALVE FROM OPERATING CORRECTLY. PLEASE REFER TO OPD MANUFACTURER'S INSTALLATION INSTRUCTIONS FOR CORRECT FITMENT.

5. Apply thread grease to the threads on cartridge cap and carefully tighten into the main body of the RIS-FLANGE4-TEE using RIS-TOOL 5216.



ALWAYS USE NON-SPARK TOOLS!

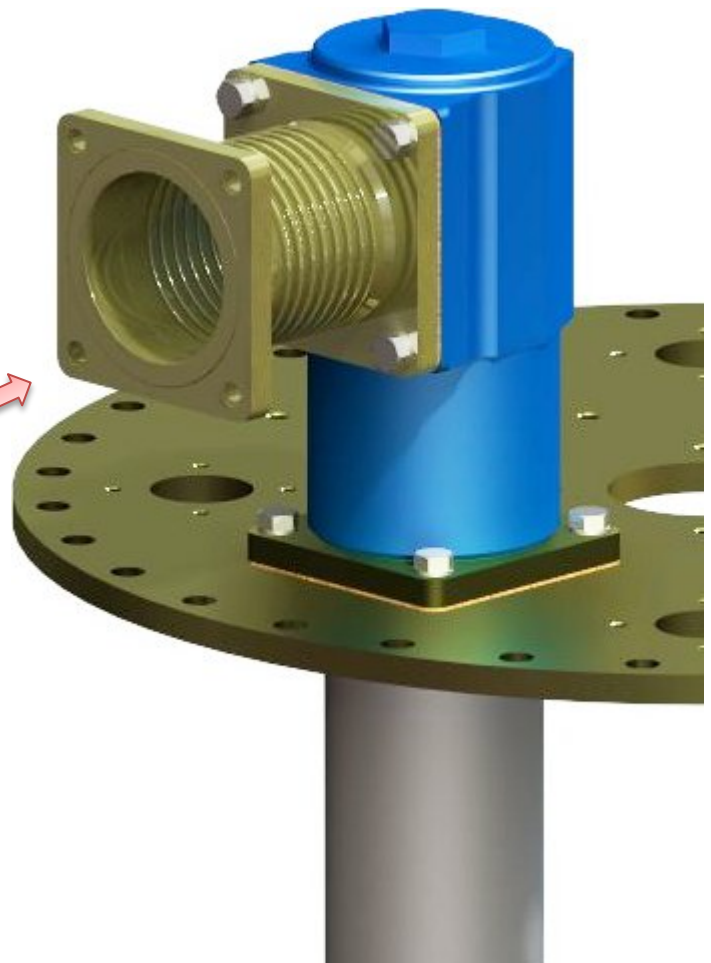


6. Loosen M12 bolts using a 19mm non-spark socket/spanner, then rotate valve to align the inlet face with the pipe work.

7. Re-tighten M12 bolts when valve is aligned.

8. Fit flex connector (optional) to the RIS-FLANGE4-TEE valve body, using gasket and M12 bolts supplied:

9. Fit swivel end of the flex connector to inlet pipe work.



ALWAYS USE NON-SPARK TOOLS!

FOR REFERENCE.

Risbridger Ltd offer a range of tools and accessories specifically designed for Risbridger products. For further details please contact Risbridger or alternatively, order direct from our website: www.risbridger.com

WARRANTY.

All RISBRIDGER Ltd products are guaranteed against defects in material and workmanship for a period of 12 months from the date of purchase subject to normal use and service. The sole obligation under this warranty is limited to repair or replacement, at the option of RISBRIDGER Ltd any product found to be defective upon examination provided that such product will be returned for inspection carriage paid, within three months of installation. Liability is strictly limited to replacement of defective parts manufactured by RISBRIDGER Ltd and no liability can be accepted for any loss or consequential damages arising from the installation or use of any products supplied by RISBRIDGER Ltd whatsoever the cause. This warranty shall not apply to any product subject to abuse, negligence, accident, misapplication or any alteration by others.

