

Installation Instructions for: RIS-ASV (2" Anti-Syphon Valve)



ALWAYS USE
NON-SPARK TOOLS!

Risbridger

Quality Engineering Solutions

ALWAYS USE NON-SPARK TOOLS!

Introduction:

The 2" Risbridger Anti-Syphon Valve is suitable for Petroleum Spirit and Diesels stored in above ground tanks and have been designed to replace the elbow at the bottom of the above ground storage tank.

Their purpose is to prevent fuel syphon loss from above ground storage tanks in the case of a suction line leak at low level or at the dispenser.

They may be used for some solvents and other volatile fluids – please refer to Risbridger Ltd for advice.



ALWAYS USE NON-SPARK TOOLS!

RESTRICTIONS OF USE.

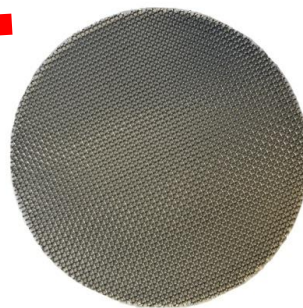
The RIS-ASV is designed to open under vacuum and so should not be installed on systems where the delivery pump air separator outlet is below the level of the ASV as this may cause the valve to open.

INSTALLATION

Before installing the Anti-Syphon Valve make sure all inlet and outlet pipework is cut to the correct length, correctly threaded and properly cleaned.

For maintenance and emergency purpose an inline ball valve must be installed above the Anti-Syphon Valve on the incoming line.

A Ø58mm filter mesh is supplied and is to be fitted into the recess on the inlet side of the valve. This mesh should be inspected at least once a year or if the flow to the dispenser slows. They are available as spares – Part No 5834

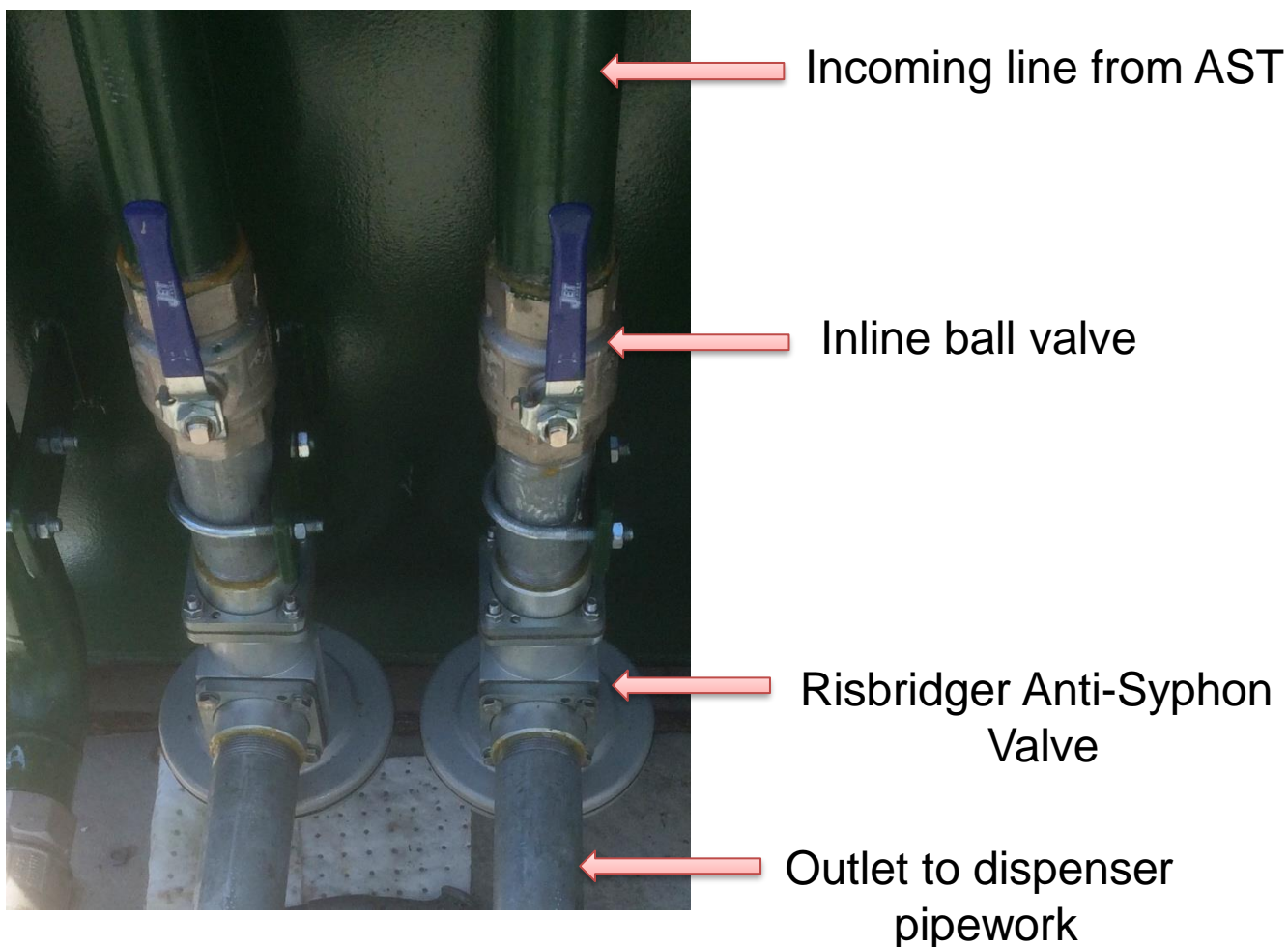


**REFER TO MAINTENANCE
INSTRUCTION LEAFLET**

**ALWAYS USE
NON-SPARK TOOLS!**

ALWAYS USE NON-SPARK TOOLS!

Above ground storage tank installation example.
All mating flange fittings, either 2" (recommended),
or 1.5" are to be ordered separately.

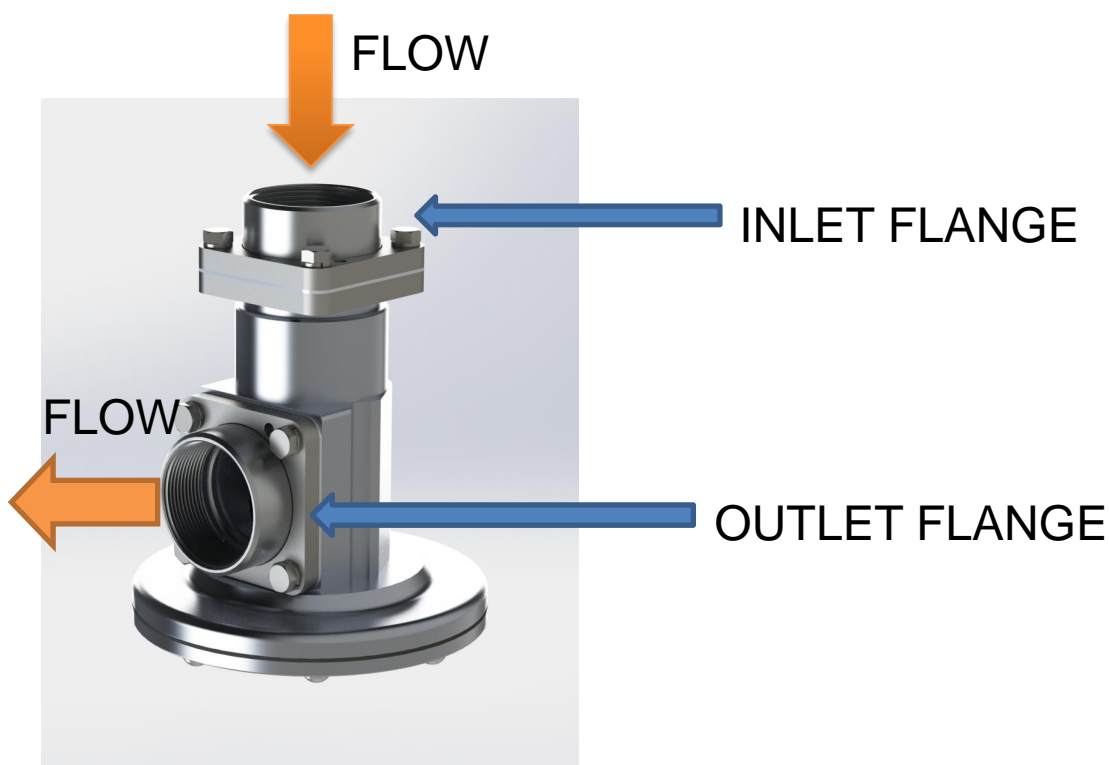


ALWAYS USE
NON-SPARK TOOLS!

ALWAYS USE NON-SPARK TOOLS!

VALVE CONFIGURATION

The valve is designed to accommodate a flow of max 180L/min. It is recommended that all inlet and outlet pipe work be 2 inch to allow optimum flow to the dispenser, however, retrofitting to existing pipework installation of 1.5" is possible. Therefore it may be that the installation requires a combination of both 2 inch and 1.5 inch fittings.



**ALWAYS USE
NON-SPARK TOOLS!**

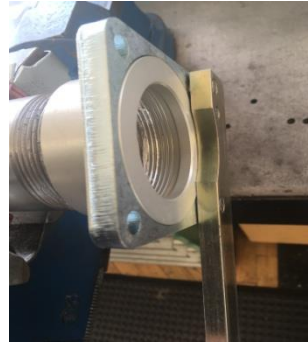
Risbridger

Quality Engineering Solutions

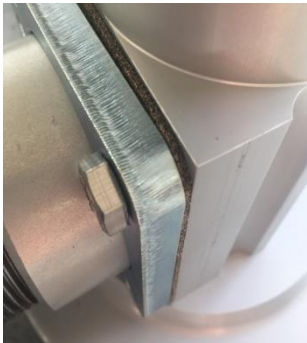
ALWAYS USE NON-SPARK TOOLS!

Fitting the flanges to the pipework

Apply soft set sealant to thread
and fasten the flange to the pipework
using special spanner.



Fasten both flanges up evenly against
the gaskets supplied



ALWAYS USE
NON-SPARK TOOLS!

Contact Details:

Risbridger

Quality Engineering Solutions

Risbridger Ltd.
25 Trowers Way,
Holmethorpe Industrial Estate,
Redhill,
Surrey.
RH1 2LH.

Tel: 08456 44 23 23. (8am – 5pm Mon-Fri)

Fax: 08456 44 24 53

Email: info@risbridger.com

Website: www.risbridger.com

UK and Eire Distributor:



Purfleet Forecourt Services Ltd.,
Unit 2-3 Wheaton Court,
Eastern Industrial Estate,
Wheaton Road,
Witham,
Essex.
CM8 3UJ.

Tel: 01376 535260.

Email: trevor.mason@purcom.com

Website: www.pfsfueltec.com

**France, Belgium, Netherlands,
Luxembourg and North Africa
Distributor:**



CGH Belgium NV,
Rijksweg 10C,
B-2280 Bornem,
Belgium

Tel: +32 (0)3 459 80 76

Email: info@cghbelgium.com

Website: www.cghbelgium.com

Document Reference: INS-RIS-ANTI-SYPHON-VALVE-161220