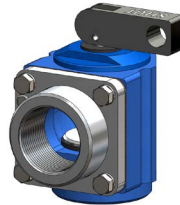
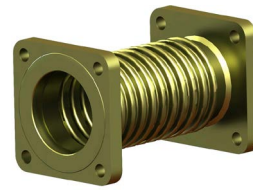


**RIS-FLANGE2-SO-SUCTION-R2-MK2**  
2" female threaded base module for use on threaded tank lid ports.

**RIS-FLANGE2-SO-VENT-R2-MK2**  
2" female threaded base module for use on threaded tank lid ports.

Flexible connectors available



<b>AVAILABLE CONFIGURATIONS:</b>	<b>RIS-FLANGE2-SO-SUCTION-15</b> 1.5" female threaded base and outlet for use on threaded tank lid ports. Includes threaded outlet flange.	<b>RIS-FLANGE2-SO-VENT-15</b> 1.5" female threaded base and outlet for use on threaded tank lid ports. Includes threaded outlet flange.
	Also available with 2" base and outlet: <b>RIS-FLANGE2-SO-SUCTION-20</b>	Also available with 2" base and outlet: <b>RIS-FLANGE2-SO-VENT-20</b>

These are part of the RIS-FLANGE Tanklid System. This a comprehensive series of products to populate either suction or pressure system tank lids with high quality, efficient fittings that are easy to install, maintain and test. This system also allows simple disassembly and reconfiguration of layout on tank lids using only hand tools.

- Lower installation costs - can be fitted to tanks in the factory or on site
- Easy to fit to the tank lid, allows 360° rotation of modules to align with pipework entry
- Available with 'Shut-Off' test fitting capability or plain 'elbow' style
- Suitable for use with Bio-Fuel blends up to 90%
- Eliminates leak paths with blind hole tappings on lid
- Compatible with all pipe work brands
- Flexible connectors available: makes fitting easy and remove stress from pipe work

#### Materials:

Anodised Aluminium  
Viton A (FKM)  
Delrin (Polyacetal)  
Stainless Steel

#### Suitable for:

Petroleum Spirit (including Ethanol Blends up to 90%)  
Diesel  
Bio Diesel/FAME Blends

#### Document Ref:

DATA-RIS-FLANGE2-SO-MODULES.150218  
**Installation Instructions**  
INS-RIS-FLANGE2-SUCTION  
**Maintenance/Service Instructions**  
MAINT-RIS-FLANGE2-SUCTION